

UPCOMING GROUP SHOW

Up to 20 works on show
February 1-29, 2008
Addison Gallery
345 Plaza Real
Boca Raton, FL 33432
(561) 338-9007

• SHOW LOCATION BOCA RATON, FL

15th Anniversary Exhibition

The Addison Gallery in Boca Raton, Florida will celebrate its 15 years of existence with a group show featuring new paintings by artists like **Olga Plam, Brent Jensen, Ying Zhao, Jurgen Gorg, Karen Hollingsworth** and **Pino**.

“Over the past 15 years, Addison Gallery has been dedicated to the presentation of the finest Contemporary Realist painters in the world,” says Patricia Bowe, gallery owner. “The gallery works with a carefully selected collection of artists who reflect the highest standards of quality and integrity within their chosen fields of painting. The gallery has specialized in a continuing process

of identifying and elevating emerging talents, as well as featuring award-winning established artists.”

Plam, who has shown with the gallery for almost five years, is a traditional still life painter who imbues her work with a deeply realist technique in the tradition of the Old Masters.

“My interest is in still lifes that have pretty closed value and color relations,” says Plam. “My approach is always chiaroscuro. That interplay of shadow and light is so important to me, and I’ve always felt that light is the most important thing in a painting. Light without the shadow doesn’t work very clearly as the interplay

of those two phenomena is very important—it creates movement and creates mood.”

Plam’s new painting, *Arrangement with Lunaria*, is a perfect example of her thoughts on colors and values at this stage in her painting career.

“There are not too many colors. Blue and white are the ones I use for this piece,” says Plam. “One blue is a dark blue, then a lighter blue and then white is included in the next blue. The Lunaria goes into the background, but at the same time it comes together with the white on the little cup. It also creates a brilliant contrast with the dark blue when they are over the dark blue tea pot.”



YING ZHAO, PEONIES AND LEMONS,
OIL ON CANVAS, 30 X 20"



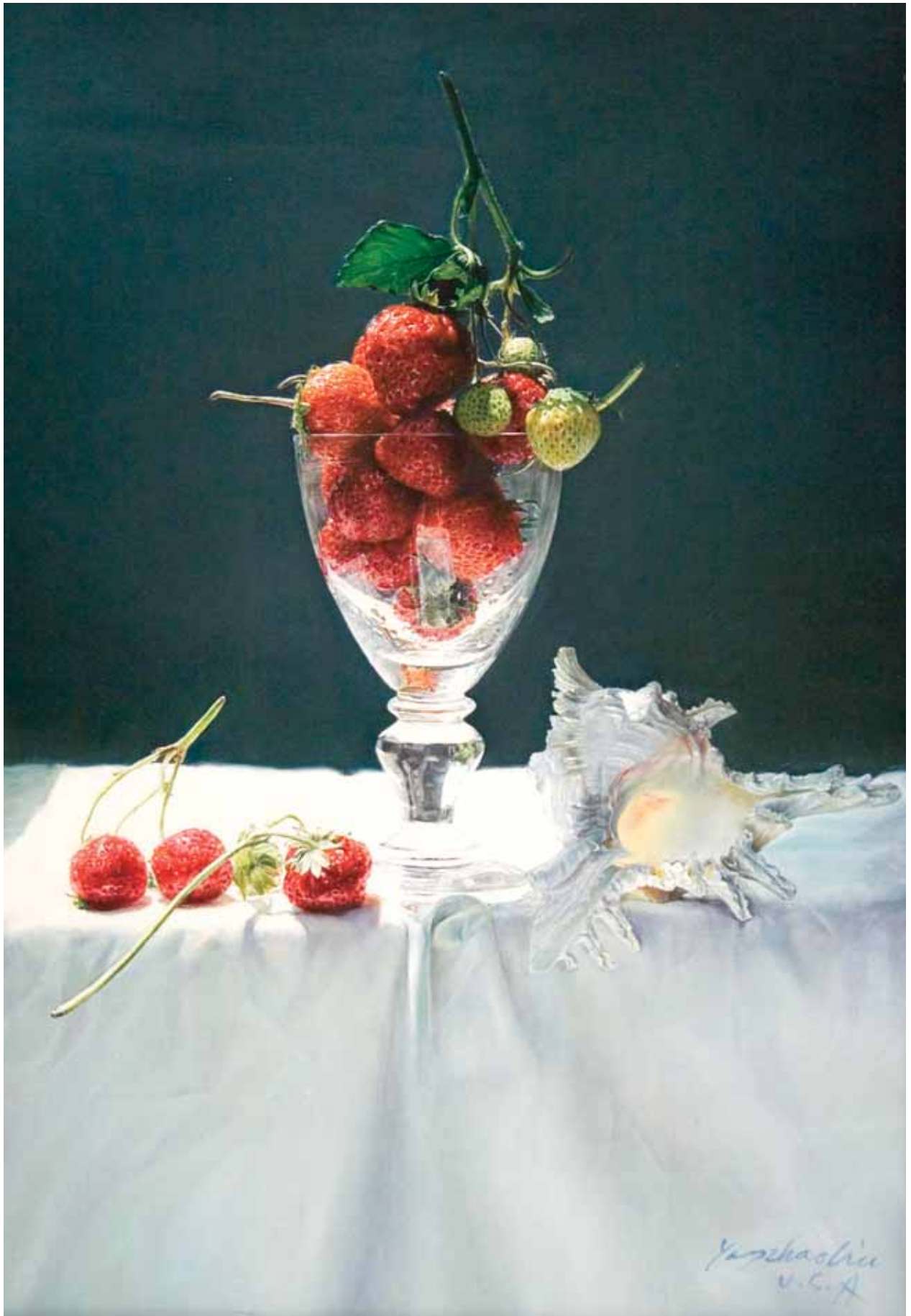
OLGA PLAM HAS BEEN SHOWING AT THE ADDISON GALLERY
IN FLORIDA FOR ALMOST FIVE YEARS.



KAREN HOLLINGSWORTH, THE ARRANGEMENT, OIL ON CANVAS, 36 x 48"



OLGA PLAM,
ARRANGEMENT WITH LUNARIA,
OIL ON BOARD, 9 x 12"



YING ZHAO, STRAWBERRIES IN GLASS, OIL ON CANVAS, 26 X 18"



JURGEN GORG, PAS DE DEUX, OIL ON CANVAS, 55 X 39"



BRENT JENSEN, LANDS END, OIL ON CANVAS, 8 X 10"




PINO, WRAPPED IN YELLOW, OIL ON CANVAS, 29 X 16"

Plam has been drawn to still lifes for most of her career because of the creative freedom they give her in both set up and the actual painting process.

"I like to paint still lifes very much not only because I'm in control, but because it's a double creative endeavor for me," says Plam. "In the first place, I do the installation, which is art in itself, and then the second art, which is the painting. I have lots of fun creating these things and the first is just as important as the second."

Hollingsworth paints beautifully serene interiors that draw the viewer directly into the scenes. Her piece in this new exhibition is titled *The Arrangement* and is different for Hollingsworth as it features a still life set up within one of her usual interior scenes. Hollingsworth's interiors usually include blowing curtains, which symbolizes movement within the painting.

"I want to create the feeling of movement in the air, about the great feeling you get at the ocean when you have the breeze, the light and that feeling from the ocean—a calming feeling, maybe an emptiness, possibly a sadness that is mixed with the freedom that comes from the ocean itself," says Hollingsworth. "It makes it feel like these rooms are somewhere I want to be." ●

For a direct link to the exhibiting gallery go to 

www.americanartcollector.com