

UPCOMING SHOW

Up to 20 works on show
January 1-31, 2008
Addison Gallery
345 Plaza Real
Boca Raton, FL 33432
(561) 338-9007

● SHOW LOCATION BOCA RATON, FL

TAE PARK

Soft-hued charms

Tae Park switches subject matter with an ease not typically found in contemporary realism. Whether it is a soft-hued portrait of an antique bicycle, an up close portrait capturing a singular human emotion or an urban landscape filled with impressionist color, Park is an artist who is able to infuse each work with her own diffused and painterly style.

"I want to capture the fleeting moments of certain calmness that I felt during the time I spent in that particular scene," says Park. "Painting these people, places and events is kind of a meditation for me. I want to be seen as a traveler, as an artist who is constantly searching for myself through my paintings."

Park's portraits come from random encounters with people during the day and are all painted with the suggestion that the viewer is capturing a hidden, intimate moment in the lives of the subject matter. One new painting, *Dreaming Of Her Dream*, depicts a woman that Park came across while on a long plane trip.

"I met her on a plane to Paris," says Park. "She was going to go see her love. I was fantasizing that she was dreaming of that moment when she meets him. It's hard for me to describe what I want people to get from my paintings. I would rather have them look and come up with their own thoughts."

Memories of past experiences are something that Park tries to convey through many of her paintings. For her, these memories are sometimes more important than the realities of the present day.

"I want the viewers to be reminded of their own journeys through their memories," says Park. "I want them to remember in their life what gave them pleasure. Sometimes, I also like



DREAMING OF HER DREAM, OIL ON CANVAS, 22 X 16"

The artist says: I met her on a plane to Paris. She was going to go see her love. I was fantasizing that she was dreaming of that moment when she meets him.



WET DAY, OIL ON CANVAS, 18 X 24"

The artist says: I wanted to capture the reflections of the urban life in the rain.



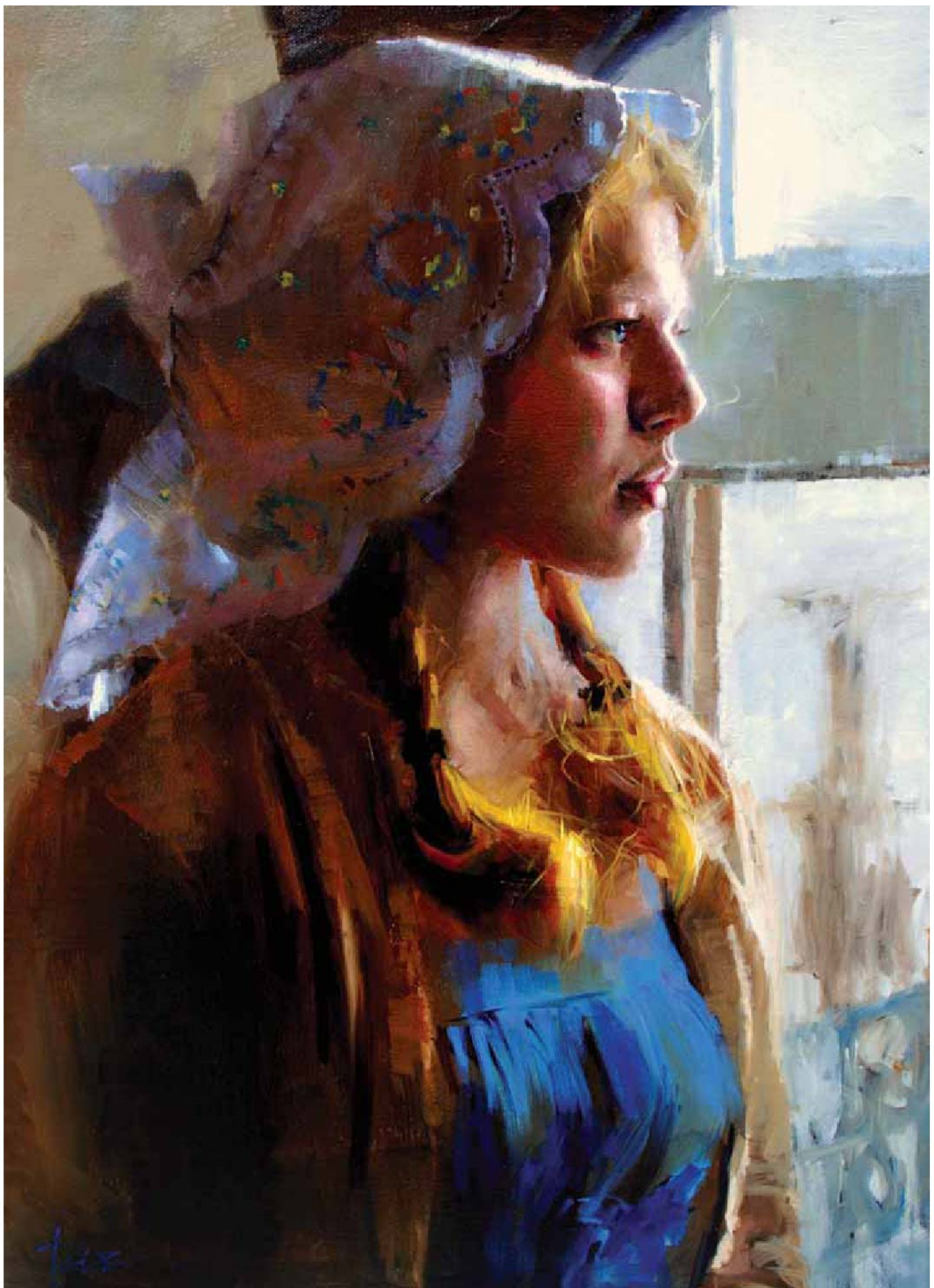
GIRL IN JUNE, OIL ON CANVAS, 24 X 18"

The artist says: I wanted to capture her inner beauty.

The Gallery Says . . .

"Tae Park paints a wide selection of subject matter—the classical figure, mythological nymphs, antiquated bicycles tying the viewer to childhood memories, cityscapes of metropolitan areas worldwide, European street scenes from her many painting trips, historical areas, and simple, but elegant still life. Her technique of alternating from saturated pigment to diffused paint application gives each piece a soft-focus feel."

— Patricia Bowe, Director,
Addison Gallery



BLUE BIRD, OIL ON CANVAS, 24 x 18"

The artist says: I wanted to capture a feeling of hope.

► DRAIAD, OIL ON CANVAS, 30 x 40"

The artist says: This is a tree nymph, or the nymph of the forest.



ANTIQUE BICYCLE, OIL ON CANVAS, 24 X 30"

The artist says: I met this bicycle in Amsterdam. I could feel the journey of someone's life through it.



to incorporate a little bit of fantasy with my idealized reality. This is apparent in my ongoing Nymph series."

Collectors have always responded to Park's sense of painterly style as well as her ability to create color and texture on the canvas. This ability has also led to many awards throughout her career.

"Some collectors like my use of brush strokes, and others say that they like the feeling of walking into that precious moment in the painting," says Park. "My greatest moment so far in my career was when I was awarded first place from the Portrait Society of America. That also started to get galleries interested in my work." ●

For a direct link to the exhibiting gallery go to

www.americanartcollector.com

Price Range Indicator

Our at-a-glance Price Range Indicator shows what you can expect to pay for this artist's work.

	Small	Medium	Large
2008	\$1,600-\$4,000	\$4,000-\$10,000	\$10,000-\$40,000